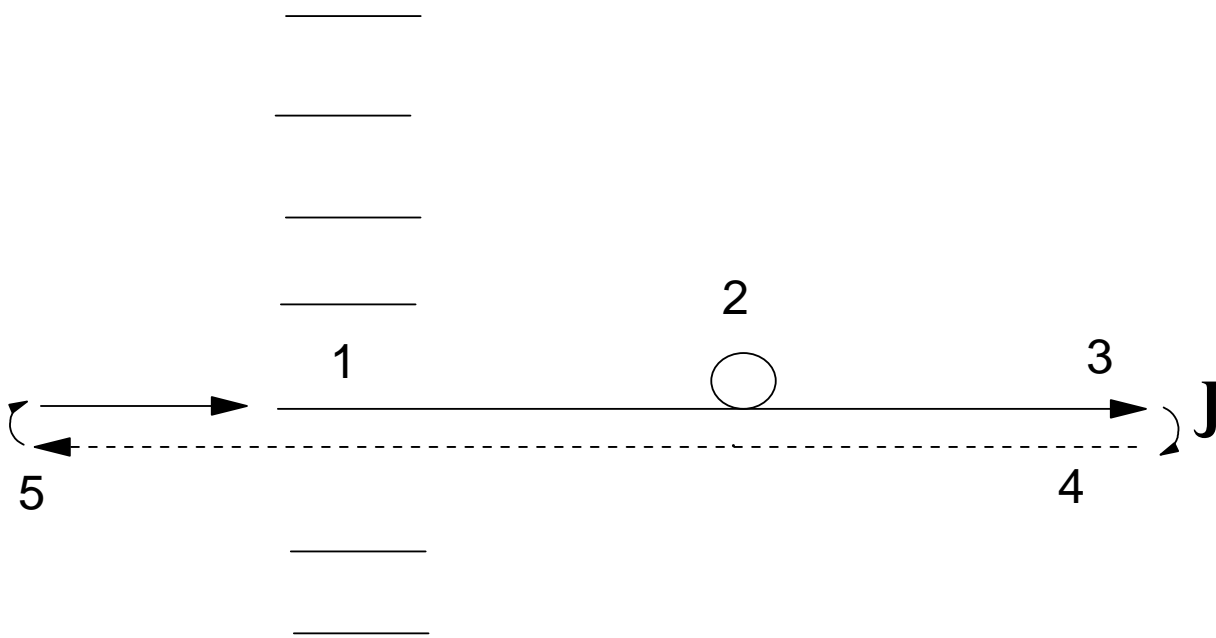


SHOWMANSHIP



- 1) Line up side by side, facing the judge
- 2) Walk towards judge
- 3) Execute a 360° turn halfway to judge, then walk to judge
- 4) After inspection, turn and trot back towards the line up
- 5) Trot past the line up
- 6) Stop, turn, and walk into line

Walk _____
 Trot - - - - -
 Judge J

Designed by
 Tracy Goodbrand